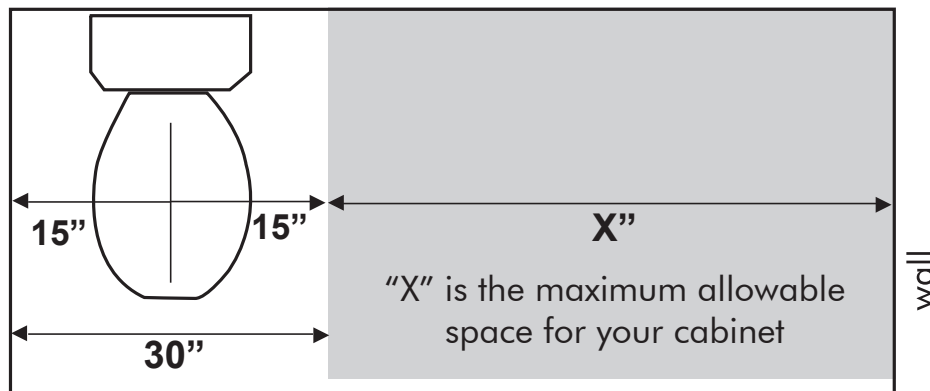


## Measuring for a Cabinet

- Local building code requires a minimum of 30" space for a toilet.
- If your sink and toilet are on the same wall, measure 15" over from the center of the toilet or the drain.
- From that point the space remaining is your maximum sink cabinet size



## Selecting a Cabinet for a Great Look

- Our cabinets are furniture pieces and are not designed to look built-in or be installed wall-to-wall.
- They look best with a minimum of 1" on each side.
- Consider the function of each bathroom as well.